



**Newsletter – Issue 34**  
**Week Commencing – 07 June 2021**  
**St Thomas More Catholic Primary, A Voluntary Academy**  
Creswick Lane, Grenoside, Sheffield, S35 8NN T : 0114 2468020  
e-mail [enquiries@st-thomasmore.sheffield.sch.uk](mailto:enquiries@st-thomasmore.sheffield.sch.uk)  
Visit our website: [www.st-thomasmoresheffield.co.uk](http://www.st-thomasmoresheffield.co.uk)



### Breakfast Club 2021

Drop off is between **8:00am and 8:30am** with strictly no admissions after 8:30am. The cost is **£2 per session** (a reduction due to the free breakfast provision currently available in school). Payment will need to be made in advance via ParentMail, and accounts will be charged daily after each attendance. If there are insufficient funds on your child's account, they will be allowed to attend that day, but will subsequently, not be given entry until there are sufficient funds paid to their Breakfast Club Account.

Children must be brought to the main entrance by a parent/carer - please queue up the ramp, following the 2m markings. Children will sign in at reception as normal; however, **no cash will be accepted in school.**

The names for the new CMATs have been chosen:

**CMAT1:** St Clare Catholic Multi Academy Trust

**CMAT2:** St Francis Catholic Multi Academy Trust

St Thomas More will be in CMAT1



The National School Breakfast Programme has launched its breakfast at home area on the Family Action website, where you will find lots of information and advice on providing a low cost, nutritious, daily breakfast at home. Here is the link:  
[www.family-action.org.uk/BreakfastAtHome](http://www.family-action.org.uk/BreakfastAtHome)

### Important Dates

**Monday 21<sup>st</sup> June**

Year 1 Animal Experience in School

**Tuesday 22<sup>nd</sup> June**

St Thomas More Feast Day

**Wednesday 23<sup>rd</sup> June**

Year 5 Trip to Weston Park Museum

**Thursday 24<sup>th</sup> June**

Year 3 trip to Go Ape

**Monday 28<sup>th</sup> June**

Year 1 & Year 5 Whitley Hall Cricket Session in School

**Tuesday 29<sup>th</sup> June**

Reception & Year 2 Sam's Safari in school

**W/C 5<sup>th</sup> July**

Sponsored marathon week

**Monday 5<sup>th</sup> July**

Year 1 & Year 5 Whitley Hall Cricket Session in School

**Tuesday 6<sup>th</sup> July**

Year 4 trip to Mossy Lea, Glossop

**Friday 9<sup>th</sup> July**

Sponsored Marathon money to be handed in by

**Tuesday 13<sup>th</sup> July 2021**

Year 6 High Rope Adventure Course trip- Sheffield Institute of Sport

**Thursday 15<sup>th</sup> July**

Year 6 End of Year Retreat Day (non-uniform)

**Friday 16<sup>th</sup> July**

Last day of the school year

**Jesus said: "Love one another as I have loved you."**

At St Thomas More our Mission is to love and to come the wonderful person God created us to be.

# WHOLE SCHOOL INFORMATION

## STM GEOGRAPHY COMPETITION



### Calling all St Thomas More Geographers!

We are running a whole school competition this half term and we are asking you to get involved. The competition will be running for 4 weeks, starting from Wednesday 9<sup>th</sup> June to Wednesday 7<sup>th</sup> July and we are going to be choosing one winner from each year group for their amazing work. The winner will receive a special certificate and a prize.

All you have to do to enter is bring into school a piece of work about a country of your choice. If you or your family are from a different country, it would be amazing if you could base your work around that country!

#### **Your work can come in any form. Please see some ideas below of what you can do:**

- With an adult, cook a dish from your country of choice. You could bring this into school, or you could take photographs.
- Research the country of your choice and create a travel guide for someone who may want to visit.
  - Re-create the flag and be as creative as you like – what materials could you use?
- Find out what language is spoken in your country and write a guide on how to learn some of the language.
  - Create a piece of artwork about your country of choice.
- If your country has a traditional dance, could you have a go yourself and take a video to show to your class?

**You can return your work in at any point during this time, but please make sure that your name and year group is written on the back.**

# WHOLE SCHOOL INFORMATION



With the arrival of some lovely sunny weather, it is really important that each child brings a water bottle to school. A sun hat and sun cream is also essential.

We've had a report of head lice in school, please can parents/carers be vigilant and check your children's hair and treat if necessary ☺

For advice with how to treat please visit:

[Head lice and nits - NHS \(www.nhs.uk\)](http://www.nhs.uk)



Below is the list of Teachers and Teaching Assistants that will be working in each year group for the next academic year (i.e. from September 2021):

**F2:** Miss Chappell & Mrs. Ash

**Year 1:** Miss Bowman & Miss Ryan

**Year 2:** Mr. Platts, Mrs. Beyer & Miss Carder (TA job share)

**Year 3:** Miss Bennett, Mrs. North & Mrs. Kirk (TA job share)

**Year 4:** Mrs. Lord, Mrs. Reaney & Miss Bridges

**Year 5:** Miss Briddock & Mrs. Sweeney

**Year 6:** Miss Garner & Mrs. Hepkin

Mrs. Curry will be working with children across the school.

# WHOLE SCHOOL INFORMATION

## PE Kits



In summer 2 we would like to trial children coming to school in their PE Kits on the day/days they have PE. There are a number of reasons for this as follows:

1. We are getting an increased number of requests from our older children who understandably want to change in a separate area and we don't have enough space to accommodate this
2. Lots of children are forgetting their PE kit resulting in them missing PE on a weekly basis
3. Being in PE kit would save significant time getting changed for PE and then back again into Uniform

Our PE kit is as follows:

*For indoor PE in school, children require black, grey or navy shorts, and a plain white T-shirt (with or without school logo), children do indoor PE in bare feet. For outdoor PE, children wear their indoor PE kit in warm weather, they also need a pair of trainers/pumps for outdoor games. In colder weather, children need a pair of jogging bottoms and a long sleeved top to keep them warm; these should be plain navy blue, grey or black, with no logo.*

If children wish to wear their school jumper as their top on these days that is absolutely fine. When coming in PE kit, please ensure that children are dressed appropriately for the weather. If your child participates in a sports after school club and this is on a different day to their class based PE, they would need to bring their PE Kit into school on those days.

PE days for Summer 2:

F2- Thursday

Y1- Tuesday & Thursday

Y2- Thursday & Friday

Y3- Monday & Friday

Y4- Wednesday & Friday

Y5- Monday & Wednesday

Y6- Tuesday & Thursday

# WHOLE SCHOOL INFORMATION



## CELEBRATION FRIDAY WINNERS

Friday 28<sup>th</sup> May

F2	Sebastian	For	Asking lots of questions about the different mini beasts we found on our marvellous mini beasts hunt and taking good care of the mini beasts we had in class. Well done Seb 😊
	Sanjana		Listening really carefully in RE and making a lovely picture of your school friends. Well done Sanjana 😊
Y1	Heath	For	Being kind and polite to all around you – you have tried hard to make sure you are playing nicely with other children all week. Well done!
	Erin G		Sharing your enthusiasm and knowledge about road safety and knowing what to do in an emergency! You have been a great role model to the class on how to act calmly and correctly when you need help! Great job!
Y2	Lily	For	Teaching me your fantastic spelling rhymes! You have shown me that you are so eager to learn the Y2 red words and have been so enthusiastic about your rhymes you use to help you. This has also helped others! Thanks Lily you are a star!
	Roger		Your excellent writing this week! You have blown me away with your detailed, descriptive writing about potions and transforming into a hyena! It gave me goose-bumps! Keep up the good work 😊
Y3	Franklyn B	For	Your great thoughts and reflection on choices and consequences in our RE lessons this week. Well done for thinking about this so carefully.
	Rohan		Trying your hardest in maths this week. You have pushed yourself with your learning and you are using star words in a fantastic way. Well done!
Y4	Percy	For	Being a supportive and encouraging teammate in our game of rounders this week. Well done Percy.
	Tristan		Producing some lovely artwork for our RE display on Building Bridges.
Y5	Simon	For	Always being such a positive and enthusiastic member of the class, this week and every week! Simons always tries his best and most importantly, he always has a huge smile on his face! Keep it up Simon!
	Macy		Putting a high amount of effort into our maths lessons this week. Your hard work and determination has meant that you have made great progress in your learning during our fractions topic. Well done Macy!
Y6	Erick	For	Being a good friend to another classmate by helping out and caring without being asked! Keep it up!
	Maisie		Outstanding effort into your maths work on evaluating and interpreting pie charts! Keep it up!

# WHOLE SCHOOL INFORMATION

## GROWTH MINDSET AWARD WINNER!



### Last week's winner is Allyssia in Year 3 for:

Trying your hardest in every lesson and not being afraid to ask for help when you need it. You have pushed yourself with your learning in all subjects and you have challenged yourself! We are really proud of you, well done Allyssia!

## Last Week's Attendance & Punctuality

Class	Percentage Attendance	Lates
F2	96	1
Year 1	99.3	1
Year 2	97	2
Year 3	93.9	3
Year 4	97.6	0
Year 5	92	0
Year 6	94.7	2
<b>School Total</b>	<b>95.7</b>	<b>9</b>

Wow! Well Done Year 1! You will receive an extra playtime for your great attendance last week!



### 100% Attendance & Punctuality Winners

F2	Nathan
Year 1	Stasiu
Year 2	Sophie
Year 3	Franklin C
Year 4	Naomi
Year 5	Guedaliah
Year 6	Sophia

## Outstanding Homework Winner



F2	Dominic
Y1	Finlay W
Y2	Parker
Y3	Lewam
Y4	James
Y5	Sophie
Y6	Layla



# WHOLE SCHOOL INFORMATION

# Stay|Safe|Sheff

## Coronavirus (COVID-19)

[sheffield.gov.uk/coronavirus](https://sheffield.gov.uk/coronavirus)

**Our Community Covid Bus will be in your area  
on the dates and times below:**

**Friday 11th June 10am – 3pm**

Hillsborough Park Car Park, Parkside Road,  
Hillsborough. S6 2AB

**Our friendly team can provide a whole host of  
information and support on COVID-19 issues, including:**

- Accessing COVID-19 tests
- Self isolating
- Financial help
- Vaccinations

**Supported lateral flow tests with your results in 30 minutes**

**Booking your vaccination appointment**

**Free take home LFD test kits**

**Free leaflets and self isolation packs**

We can also provide information in multiple language formats

**Do not come to the vehicle if you have COVID-19 symptoms,  
you must isolate and book a PCR test.**

**Go to [www.gov.uk/get-coronavirus-test](https://www.gov.uk/get-coronavirus-test)  
or call 119 to book**



# WHOLE SCHOOL INFORMATION



**Please help everyone by adhering to the social distancing rules and the changing Government Road Map, to keep yourselves and your family safe.**

Testing those who are symptomatic of Covid19 is a key strategy in managing and reducing the spread of the virus.

Detailed below is the government guidance on what the symptoms are of Covid19:

- **a high temperature** – this means you feel hot to touch on your chest or back (you do not need to measure your temperature)
- **a new, continuous cough** – this means coughing a lot for more than an hour, or 3 or more coughing episodes in 24 hours (if you usually have a cough, it may be worse than usual)
- **a loss or change to your sense of smell or taste** – this means you've noticed you cannot smell or taste anything, or things smell or taste different to normal

In line with DFE guidance, anyone who is symptomatic we are asking that they be tested. Please note the period of isolation for the person with symptoms is 10 days from the start of symptoms, a household member would need to isolate for 10 days. Day 1 is the day after symptoms or the day after a positive test if no symptoms.

Here is a reminder of the key protective measures we are asking you to follow. (Please do not be offended if school staff remind you regarding the below, it is about working together to help stop the spread of the virus).

- Please keep 2m apart from anyone not in your household- this helps to limit the spread of the virus. There are 2m markings throughout the school site to support this.
- Please wear a face mask/covering on school site unless you are exempt.
- Please keep your child/children with you at all times- this supports the protective bubble we have in place in school.
- Although we love to chat to our families, in order to keep lines moving, please phone/email or send a note into school with any messages, for staff.
- Only 1 parent/carer per family to come on school site at drop off/pick up times- this helps to keep the number of people on school site at any one time to a minimum.
- Once you have dropped off/picked up your child/children, please do not congregate in groups outside the school gates. We ask that families move away from the entrance/exit to avoid causing congestion, which causes problems for others entering or leaving the school site.

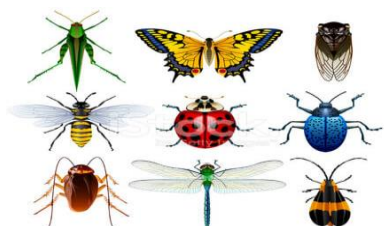


# TRIPS AND EVENTS

We are so happy and excited that we are able to bring this page back. See below some trips/events that are taking place:

## F2 Sam's Safari in School

**Tuesday 29<sup>th</sup> June**



On Tuesday 29th June F2 are having an animal workshop run by Sam's Safaris. We are going to learn about lots of different animals from the furry team, scaly team, creepy crawly team and the slimy team and even get the chance to be super brave and hold them! I wonder what animals we might get to see. 😊

The cost of this workshop is covered through the SHINE project.

## Year 2 Sam's Safari in School

**Tuesday 29<sup>th</sup> June**



Sam's Safari will be coming into our class on the morning of the 29th of June, to show us a range of animals including reptiles, furry friends and minibeasts..... Miss Bowman hopes there are no spiders!! We are going to learn about the life cycle of animals and animal babies which links with our current science topic! 😊

We are asking for a small contribution of £2.50, please see ParentMail for payment.

## Year 1 Animal Experience

**Monday 21<sup>st</sup> June**



In Y1 we are very lucky to have WildHouse Animal Encounters visiting our classroom on the 21<sup>st</sup> of June 2021. This will take place during school time where the children will engage in a 2-hour session with over 15 different types of animals! There will be 2 dedicated animal handlers there to answer any questions about the animals – which links up fantastically to our current theme 'Crazy Creatures'.

In the session, we will be able to use our knowledge of types of animals to work out if they are insect, mammal, reptile, etc – and hopefully we can show off our learning about animal diets too! Each child will also get the opportunity to handle the animals (if we're brave enough!).

We are asking for a contribution of £5.00. Please see ParentMail for payment.

## Whitley Hall Cricket club coaching sessions



Y1 and Y5 will be having cricket coaching sessions on Monday 28th June and Monday 5th July so they will need their PE kit on these days.

# TRIPS AND EVENTS

## Year 3 Trip to Go Ape

Thursday 24<sup>th</sup> June



On Thursday 24<sup>th</sup> June, Class 3 will be taking part in an amazing treetop adventure at Go Ape in Sherwood Forest! We will be testing ourselves physically and mentally in a tough treetop trek. The children will experience tree-to-tree crossings, free-fall Tarzan swings and riding super fast along very long zip wires! We think the children are going to love this amazing experience!

We will be spending a full day in the Sherwood Forest site. We will be taking part in an adventure trail, and we will be challenging ourselves with teamwork activities including a very exciting blind fold challenge! This will be a great opportunity for the children to work as a team and have a fun-filled day out towards the end of the school year.

Children should come to school in their normal outdoor PE kit (white t-shirt, dark-coloured shorts or joggers and trainers) and will be permitted to stay in this all day. All long hair must be tied up. Please bring a packed lunch and a water bottle.

The pricing, including the coach and the course, is £20.00 per child. Please see ParentMail to give consent/pay for your child to go on this trip. Unfortunately, if we don't have enough contributions towards this trip before Friday 11<sup>th</sup> June it will have to be cancelled.

## Y4 Trip- Mossy Lea, Glossop

Tuesday 6<sup>th</sup> July 2021



Countryside Learning are running a project, across different grouse moors in England, to enable primary school children, from schools which are 'local' to the heather moorland to access the moors and learn about:

- The Wildlife on the moors
- Emergency Services- Keeping our moors safe
- The job of a moorland gamekeeper
- The National Parks - Their role in conservation of the uplands

The main aim of the project is to educate primary school children, about the countryside on their doorsteps, and hope that they gain an increased understanding of wildlife and human life on the moors. We want them to experience the awe and wonder of their local moorland and encourage them to want to access it.

The trip takes place in **Mossy Lea in Glossop**, which is a truly beautiful part of our countryside. The coach will set off at 08:30am, so please make sure children are in school by **08:15am**. They will be back to school before the end of the school day.

### The Weather:

Children must dress appropriately for the outdoors so please ensure they have:

A waterproof coat

A rucksack to carry their lunch, 2 water bottles and have room to put their coat in if it gets warm.

Trousers that are warm and comfortable for walking

Suitable footwear, ideally walking boots or trainers that are suitable for walking in.

A hat and their own sun cream, which they must apply themselves.

Please do not send them in any items of clothing that you are unhappy to be potentially covered in mud by the end of the day.

*This trip, including the travel costs, is completely free. It has been part-funded by Countryside Learning and the short fall has been made up from the Year 4 class budget. All we need is permission for your child to attend. Please see ParentMail for the online permission form.*

# TRIPS AND EVENTS

## Year 5 Local History Workshop at Weston Park Museum

**Wednesday 23<sup>rd</sup> June 2021**



Year 5 will be going to Weston Park Museum to take part in a local history workshop on Wednesday 23<sup>rd</sup> June 2021. We will be travelling to the museum by coach and we will be aiming to leave school at approximately 9:30am, so that we are ready to begin our session in the museum at 10:15am.

Please bring a packed lunch and a water bottle, as we will be having a picnic in Weston Park after our workshop. During the afternoon, we will spend some time playing rounders in the park. We will then return to school at approximately 2:30pm, so that we are back for normal pick up time.

The pricing for the trip will be £7 per child. The cost of the trip has been subsidised from the class budget. Please see ParentMail to give consent and pay for your child to come on this trip. Unfortunately, if we do not have enough contributions towards this trip then it will be cancelled.

## Sponsored Marathon



To help raise funds for our Nature Garden we are asking children to collect sponsorship for a whole class marathon.

During the week commencing 5<sup>th</sup> July each class in KS2 will run a marathon around our field. Every child will complete 3 ½ laps of the field and their time will be added to an overall total for the whole class.

The class in KS2 with the quickest time wins a prize!

EYFS and KS1 children will be working together to complete a shared marathon with each child completing one full lap of the field.

Your child will be provided with a sponsorship form to keep a record of their sponsors. The money that they raise will need to be brought to school in the form of cash or cheque made out to St Thomas More Catholic Primary.

Please return any money raised by Friday 9<sup>th</sup> July.

# TRIPS AND EVENTS

## Year 6 End of Year Retreat Day

**Thursday 15<sup>th</sup> July 2021**



Attention Y6: On Thursday 15th July, we will be having our end-of-year retreat day - ALL DAY!!

This will be in school, but you can wear your own clothes this day! We will be having a fun-filled, reflective day before we set off to secondary school.

## St Thomas More Feast Day

**Tuesday 22<sup>nd</sup> June**



To mark this day, school have traditionally booked an ice-cream van and all children and staff get an ice-cream each. We will do the same this year (children with dietary requirements will be provided with an alternative)

## Year 6 High Rope Adventure Course-

Sheffield Institute of Sport

**Tuesday 13<sup>th</sup> July 2021**

Y6 will be going to the Sheffield Institute of Sport to take part in a High Rope Adventure Course on Tuesday 13th July 2021. We will be manoeuvring around 34 challenging obstacles! We will start off the day in school and then leave at 11:15am, travelling by coach. Children will be back to school before the end of the school day.

Children should come to school in their normal outdoor PE kit (white t-shirt, dark-coloured shorts or joggers and trainers) and will be permitted to stay in this all day. Please bring a packed lunch and a water bottle for a picnic before we start our course.

The pricing, including the coach and the course, is £8.50 per child. Please see ParentMail to give consent/pay for your child to go on this trip. Unfortunately, if we don't have enough contributions towards this trip it will have to be cancelled.